

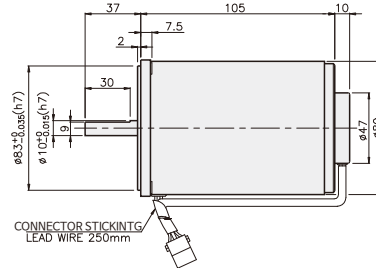
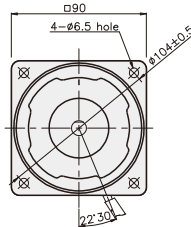
SPEED CONTROL MOTOR - SU SERIES

40W

□90mm

REVERSIBLE MOTOR

K9RS40N□-SU



SPECIFICATIONS

40W 30 minutes rating, four poles

Model	Voltage (V)	Frequency (Hz)	Speed (rpm)	Permissible Torque		Start T. (N·m/kgf·cm)	Current (A)	Condenser (μF)
				1200rpm (N·m/kgf·cm)	90rpm (N·m/kgf·cm)			
K9R□40NJ-SU	100	50	90 ~ 1400	0.3/3	0.075/0.75	0.17/1.7	1.5	16
		60	90 ~ 1700			0.18/1.8	1.6	
K9R□40NU-SU	110	60	90 ~ 1700	0.3/3	0.075/0.75	0.14/1.4	1.5	10
	115					1.3		
K9R□40NL-SU	200	50	90 ~ 1400	0.33/3.3	0.07/0.7	0.17/1.7	0.65	4
		60	90 ~ 1700	0.26/2.6		0.72		
K9R□40NC-SU	220	50	90 ~ 1400	0.33/3.3	0.07/0.7	0.17/1.7	0.6	3.5
		60	90 ~ 1700	0.26/2.6		0.64		
	230	50	90 ~ 1400	0.33/3.3		0.17/1.7	0.6	
		60	90 ~ 1700	0.26/2.6		0.16/1.6	0.64	
K9R□40ND-SU	240	50	90 ~ 1400	0.33/3.3	0.16/1.6	0.63	3	

※ □ : SHAFT SHAPE (S : STRAIGHT, G : PINION)

RATED TORQUE OF GEARHEAD

● Single-phase 100V/115V

unit = above : N·m / below : kgf·cm

Model Motor/Gearhead	Ratio Speed(rpm)	Ratio																							
		3	3.6	5	6	7.5	9	10	12.5	15	18	20	25	30	36	40	50	60	75	90	100	120	150	180	200
K9R□40N□-SU K9G□B(C)	1200	0.63 6.3	0.76 7.6	1.05 10.5	1.26 12.6	1.58 15.8	1.90 19.0	2.11 21.1	2.63 26.3	3.16 31.6	3.79 37.9	3.79 37.9	4.74 47.4	5.69 56.9	6.82 68.2	7.58 75.8	8.53 85.3	10 100	10 100	10 100	10 100	10 100	10 100	10 100	10 100
	90	0.17 1.7	0.20 2.0	0.28 2.8	0.34 3.4	0.43 4.3	0.51 5.1	0.57 5.7	0.71 7.1	0.85 8.5	1.02 10.2	1.02 10.2	1.28 12.8	1.53 15.3	1.84 18.4	2.04 20.4	2.30 23.0	2.76 27.6	3.44 34.4	4.13 41.3	4.59 45.9	5.51 55.1	6.89 68.9	8.27 82.7	9.19 91.9

● Single-phase 200V/240V

unit = above : N·m / below : kgf·cm

Model Motor/Gearhead	Ratio Speed(rpm)	Ratio																								
		3	3.6	5	6	7.5	9	10	12.5	15	18	20	25	30	36	40	50	60	75	90	100	120	150	180	200	
K9R□40N□-SU K9G□B(C)	1200	200V/220V	0.73	0.87	1.22	1.46	1.82	2.19	2.43	3.04	3.65	4.37	4.37	5.47	6.56	7.87	8.75	10	10	10	10	10	10	10	10	10
		230V/240V 50Hz	7.3	8.7	12.2	14.6	18.2	21.9	24.3	30.4	36.5	43.7	43.7	54.7	65.6	78.7	87.5	100	100	100	100	100	100	100	100	100
	90	200V/220V	0.56	0.67	0.93	1.12	1.40	1.68	1.86	2.33	2.79	3.35	3.35	4.19	5.03	6.04	6.71	8.38	10	10	10	10	10	10	10	10
		230V/60Hz	5.6	6.7	9.3	11.2	14.0	16.8	18.6	23.3	27.9	33.5	33.5	41.9	50.3	60.4	67.1	83.8	100	100	100	100	100	100	100	100

* Gearhead and decimal gearhead are sold separately.

* The code in □ of gearhead model is for gear ratio.

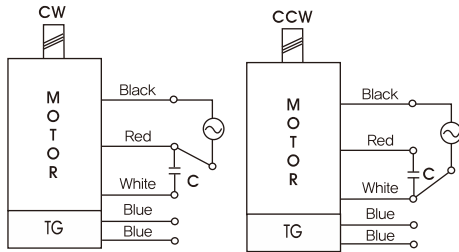
* ■ color indicates that the output shaft of the geared motor rotates in the same direction as the output shaft of the motor. Others indicate rotation in the opposite direction.

* If you are to have less ratio than the ratio in the table, you can install the decimal gearhead, which has one tenth of the ratio, between the gearhead and the motor. In this case, the permissible torque is 3N·m/30kgf·cm.

* RPM is based on motor's synchronous rpm (50HZ:1500rpm, 60HZ:1800rpm) and calculated by dividing gear ratio. Actual rpm is 2~20% less than indicating rpm according to load size.

GEARHEAD

CONNECTION DIAGRAMS



※The direction of motor rotation is as viewed from the front shaft end of the motor

DIMENSIONS

K9G□B(C)

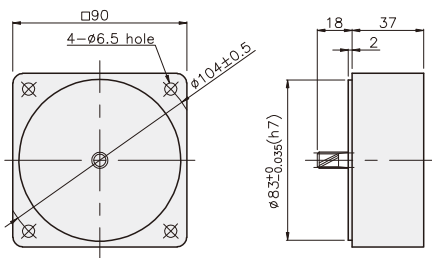


K9RG40N□-SU + K9G□B(C)



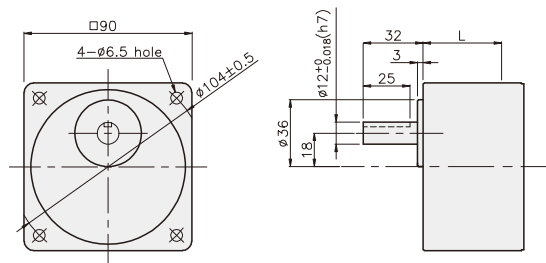
DECIMAL GEARHEAD

K9G10BX



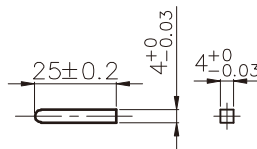
GEARHEAD

K9G□B(C)

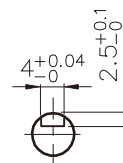


KEY SPEC

• KEY



• KEY GROOVE



DIMENSION TABLE

PART No.	L	Application Model	Mounting BOLT
01	42	K9G3~18B(C)	M6 P1.0 × 65
02	60	K9G20~200B(C)	M6 P1.0 × 80
03	37	K9G10BX	M6 P1.0 × 120

WEIGHT

PART	WEIGHT(kg)	
MOTOR	2.48	
DECIMAL GEARHEAD	0.60	
GEAR HEAD	K9G3~18B(C)	0.78
	K9G20~40B(C)	1.04
	K9G50~200B(C)	1.14

K9RG40N□-SU + K9G□B(C)

