

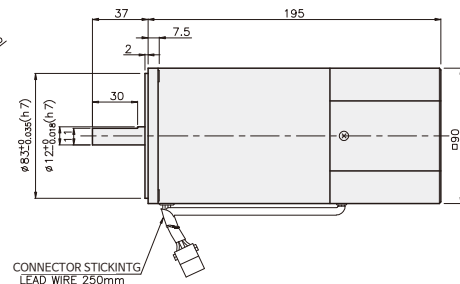
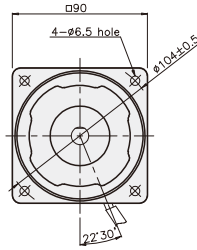
SPEED CONTROL MOTOR - SU SERIES

180W

□90mm

REVERSIBLE MOTOR

K9R180F□-SU



SPECIFICATIONS

180W 30 minutes rating, four poles

Model	Maximum Out Put (W)	Voltage (V)	Frequency (Hz)	Speed Range (rpm)	Permissible Torque		Start T. (N·m/kgf·cm)	Current (A)	Condenser (μF)
					1200rpm	90rpm			
					(N·m/kgf·cm)	(N·m/kgf·cm)			
K9RP180FJ-SU K9RS180FJ-SU	180	100	50	90~1400	0.88	0.33	0.5	5	40
			60	90~1700	8.8	3.3			
K9RP180FU-SU K9RS180FU-SU	180	110	60	90~1700	1.1	0.38	0.58	5	30
		115							
K9RP180FL-SU K9RS180FL-SU	180	200	50	90~1400	0.88	0.3	0.45/4.5	2.2	12
			60	90~1700	8.8	3	0.38/3.8		
K9RP180FC-SU K9RS180FC-SU	180	220	50	90~1400	0.88	0.3	0.42/4.2	2.2	8
			60	90~1700	8.8	3	0.38/3.8		
		230	50	90~1400	0.95	0.32	0.48/4.8	2.4	
			60	90~1700	9.5	3.2	0.45/4.5	2.2	
K9RP180FD-SU	180	240	50	90~1400	0.95	0.32	0.55/5.5	2	8

* □ : SHAFT SHAPE (S : STRAIGHT, P : PINION)

RATED TORQUE OF GEARHEAD

● Single-phase 100V/115V

unit = above : N·m / below : kgf·cm

Model	Ratio	Speed(rpm)																								
		3	3.6	5	6	7.5	9	10	12.5	15	18	20	25	30	36	40	50	60	75	90	100	120	150	180	200	
K9R□180F□-SU	1200	100V/50/60Hz	2.14	2.57	3.56	4.28	5.35	6.42	7.13	8.02	9.62	11.55	12.83	14.43	17.32	20.79	23.09	28.87	30	30	30	30	30	30	30	30
		110V/115V/60Hz	2.67	3.21	4.46	5.35	6.68	8.02	8.91	10.02	12.03	14.43	16.04	18.04	21.65	25.98	28.87	30	30	30	30	30	30	30	30	30
K9P□BU, BUF	90	100V/50/60Hz	0.80	0.96	1.34	1.60	2.00	2.41	2.67	3.01	3.61	4.33	4.81	5.41	6.50	7.79	8.66	10.83	12.99	14.61	17.54	19.49	23.38	29.23	30	30
		110V/115V/60Hz	0.92	1.11	1.54	1.85	2.31	2.77	3.08	3.46	4.16	4.99	5.54	6.23	7.48	8.98	9.97	12.47	14.96	16.83	20.19	22.44	26.93	30	30	30

- * Gearhead and decimal gearhead are sold separately.
- * The code in □ of gearhead model is for gear ratio.
- * ■ color indicates that the output shaft of the geared motor rotates in the same direction as the output shaft of the motor. Others indicate rotation in the opposite direction.
- * If you are to have less ratio than the ratio in the table, you can install the decimal gearhead, which has one tenth of the ratio, between the gearhead and the motor. In this case, the permissible torque is 3N·m/30kgf·cm.
- * RPM is based on motor's synchronous rpm (50HZ:1500rpm, 60HZ:1800rpm) and calculated by dividing gear ratio. Actual rpm is 2~20% less than indicating rpm according to load size.

SPEED CONTROL MOTOR - SU SERIES

GEARHEAD

RATED TORQUE OF GEARHEAD

● Single-phase 200V/240V

unit = above : N·m / below : kgf·cm

Model Motor/Gearhead	Ratio Speed(rpm)	3	3.6	5	6	7.5	9	10	12.5	15	18	20	25	30	36	40	50	60	75	90	100	120	150	180	200	
		K9R□180F□- SU K9P□BU, BUF	1200	200V/220V 50Hz/60Hz	2.14 21.4	2.57 25.7	3.56 35.6	4.28 42.8	5.35 53.5	6.42 64.2	7.13 71.3	8.02 80.2	9.62 96.2	11.55 115.5	12.83 128.3	14.43 144.3	17.32 173.2	20.79 207.9	23.09 230.9	28.87 288.7	30	30	30	30	30	30
230V 50Hz/60Hz 240V/50Hz	2.31 23.1			2.77 27.7	3.85 38.5	4.62 46.2	5.77 57.7	6.93 69.3	7.70 77.0	8.66 86.6	10.39 103.9	12.47 124.7	13.85 138.5	15.58 155.8	18.70 187.0	22.44 224.4	24.93 249.3	30	30	30	30	30	30	30	20	30
90	200V/220V 50Hz/60Hz		0.73 7.3	0.87 8.7	1.22 12.2	1.46 14.6	1.82 18.2	2.19 21.9	2.43 24.3	2.73 27.3	3.28 32.8	3.94 39.4	4.37 43.7	4.92 49.2	5.90 59.0	7.09 70.9	7.87 78.7	9.84 98.4	11.81 118.1	13.29 132.9	15.94 159.4	17.71 177.1	21.26 212.6	26.57 265.7	30	30
	230V 50Hz/60Hz 240V/50Hz		0.78 7.8	0.93 9.3	1.30 13.0	1.56 15.6	1.94 19.4	2.33 23.3	2.59 25.9	2.92 29.2	3.50 35.0	4.20 42.0	4.67 46.7	5.25 52.5	6.30 63.0	7.56 75.6	8.40 84.0	10.50 105.0	12.60 126.0	14.17 141.7	17.01 170.1	18.90 189.0	22.67 226.7	28.34 283.4	30	30

● Single-phase 100V/115V

unit = above : N·m / below : kgf·cm

Model Motor/Gearhead	Ratio Speed(rpm)	3	3.6	5	6	7.5	9	10	12.5	15	18	20	25	30	36	40	50	60	75	90	100	120	150	180	200	
		K9R□180F□- DK9P□BU	1200	100V 50/60Hz	2.14 21.4	2.57 25.7	3.56 35.6	4.28 42.8	5.35 53.5	6.42 64.2	7.13 71.3	8.02 80.2	9.62 96.2	11.55 115.5	12.83 128.3	14.43 144.3	17.32 173.2	20.79 207.9	23.09 230.9	28.87 288.7	30	30	30	30	30	30
110V/115V 60Hz	2.67 26.7			3.21 32.1	4.46 44.6	5.35 53.5	6.68 66.8	8.02 80.2	8.91 89.1	10.02 100.2	12.03 120.3	14.43 144.3	16.04 160.4	18.04 180.4	21.65 216.5	25.98 259.8	28.87 288.7	30	30	30	30	30	30	30	30	30
90	100V 50/60Hz		0.80 8.0	0.96 9.6	1.34 13.4	1.60 16.0	2.00 20.0	2.41 24.1	2.67 26.7	3.01 30.1	3.61 36.1	4.33 43.3	4.81 48.1	5.41 54.1	6.50 65.0	7.79 77.9	8.66 86.6	10.83 108.3	12.99 129.9	14.61 146.1	17.54 175.4	19.49 194.9	23.38 233.8	29.23 292.3	30	30
	110V/115V 60Hz		0.92 9.2	1.11 11.1	1.54 15.4	1.85 18.5	2.31 23.1	2.77 27.7	3.08 30.8	3.46 34.6	4.16 41.6	4.99 49.9	5.54 55.4	6.23 62.3	7.48 74.8	8.98 89.8	9.97 99.7	12.47 124.7	14.96 149.6	16.83 168.3	20.19 201.9	22.44 224.4	26.93 269.3	30	30	30

● Single-phase 200V/240V

unit = above : N·m / below : kgf·cm

Model Motor/Gearhead	Ratio Speed(rpm)	3	3.6	5	6	7.5	9	10	12.5	15	18	20	25	30	36	40	50	60	75	90	100	120	150	180	200	
		K9R□180F□- DK9P□BU	1200	200V/220V 50Hz/60Hz	2.14 21.4	2.57 25.7	3.56 35.6	4.28 42.8	5.35 53.5	6.42 64.2	7.13 71.3	8.02 80.2	9.62 96.2	11.55 115.5	12.83 128.3	14.43 144.3	17.32 173.2	20.79 207.9	23.09 230.9	28.87 288.7	30	30	30	30	30	30
230V 50Hz/60Hz 240V/50Hz	2.31 23.1			2.77 27.7	3.85 38.5	4.62 46.2	5.77 57.7	6.93 69.3	7.70 77.0	8.66 86.6	10.39 103.9	12.47 124.7	13.85 138.5	15.58 155.8	18.70 187.0	22.44 224.4	24.93 249.3	30	30	30	30	30	30	30	30	30
90	200V/220V 50Hz/60Hz		0.73 7.3	0.87 8.7	1.22 12.2	1.46 14.6	1.82 18.2	2.19 21.9	2.43 24.3	2.73 27.3	3.28 32.8	3.94 39.4	4.37 43.7	4.92 49.2	5.90 59.0	7.09 70.9	7.87 78.7	9.84 98.4	11.81 118.1	13.29 132.9	15.94 159.4	17.71 177.1	21.26 212.6	26.57 265.7	30	30
	230V 50Hz/60Hz 240V/50Hz		0.78 7.8	0.93 9.3	1.30 13.0	1.56 15.6	1.94 19.4	2.33 23.3	2.59 25.9	2.92 29.2	3.50 35.0	4.20 42.0	4.67 46.7	5.25 52.5	6.30 63.0	7.56 75.6	8.40 84.0	10.50 105.0	12.60 126.0	14.17 141.7	17.01 170.1	18.90 189.0	22.67 226.7	28.34 283.4	30	30

● Single-phase 100V/115V

unit = above : N·m / below : kgf·cm

Model Motor/Gearhead	Ratio Speed(rpm)	3	3.6	5	6	7.5	9	10	12.5	15	18	20	25	30	36	40	50	60	75	90	100	120	150	180	200	
		K9R□180F□- DK9P□BU	1200	100V 50/60Hz	2.14 21.4	2.57 25.7	3.56 35.6	4.28 42.8	5.35 53.5	6.42 64.2	7.13 71.3	8.02 80.2	9.62 96.2	11.55 115.5	12.83 128.3	14.43 144.3	17.32 173.2	20.79 207.9	23.09 230.9	28.87 288.7	30	30	30	30	30	30
110V/115V 60Hz	2.67 26.7			3.21 32.1	4.46 44.6	5.35 53.5	6.68 66.8	8.02 80.2	8.91 89.1	10.02 100.2	12.03 120.3	14.43 144.3	16.04 160.4	18.04 180.4	21.65 216.5	25.98 259.8	28.87 288.7	30	30	30	30	30	30	30	30	30
90	100V 50/60Hz		0.80 8.0	0.96 9.6	1.34 13.4	1.60 16.0	2.00 20.0	2.41 24.1	2.67 26.7	3.01 30.1	3.61 36.1	4.33 43.3	4.81 48.1	5.41 54.1	6.50 65.0	7.79 77.9	8.66 86.6	10.83 108.3	12.99 129.9	14.61 146.1	17.54 175.4	19.49 194.9	23.38 233.8	29.23 292.3	30	30
	110V/115V 60Hz		0.92 9.2	1.11 11.1	1.54 15.4	1.85 18.5	2.31 23.1	2.77 27.7	3.08 30.8	3.46 34.6	4.16 41.6	4.99 49.9	5.54 55.4	6.23 62.3	7.48 74.8	8.98 89.8	9.97 99.7	12.47 124.7	14.96 149.6	16.83 168.3	20.19 201.9	22.44 224.4	26.93 269.3	30	30	30

● Single-phase 200V/240V

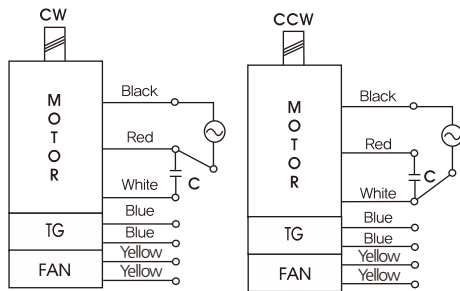
unit = above : N·m / below : kgf·cm

Model Motor/Gearhead	Ratio Speed(rpm)	3	3.6	5	6	7.5	9	10	12.5	15	18	20	25	30	36	40	50	60	75	90	100	120	150	180	200	
		K9R□180F□- DK9P□BU	1200	200V/220V 50Hz/60Hz	2.14 21.4	2.57 25.7	3.56 35.6	4.28 42.8	5.35 53.5	6.42 64.2	7.13 71.3	8.02 80.2	9.62 96.2	11.55 115.5	12.83 128.3	14.43 144.3	17.32 173.2	20.79 207.9	23.09 230.9	28.87 288.7	30	30	30	30	30	30
230V 50Hz/60Hz 240V/50Hz	2.31 23.1			2.77 27.7	3.85 38.5	4.62 46.2	5.77 57.7	6.93 69.3	7.70 77.0	8.66 86.6	10.39 103.9	12.47 124.7	13.85 138.5	15.58 155.8	18.70 187.0	22.44 224.4	24.93 249.3	30	30	30	30	30	30	30	30	30
90	200V/220V 50Hz/60Hz		0.73 7.3	0.87 8.7	1.22 12.2	1.46 14.6	1.82 18.2	2.19 21.9	2.43 24.3	2.73 27.3	3.28 32.8	3.94 39.4	4.37 43.7	4.92 49.2	5.90 59.0	7.09 70.9	7.87 78.7	9.84 98.4	11.81 118.1	13.29 132.9	15.94 159.4	17.71 177.1	21.26 212.6	26.57 265.7	30	30
	230V 50Hz/60Hz 240V/50Hz		0.78 7.8	0.93 9.3	1.30 13.0	1.56 15.6	1.94 19.4	2.33 23.3	2.59 25.9	2.92 29.2	3.50 35.0	4.20 42.0	4.67 46.7	5.25 52.5	6.30 63.0	7.56 75.6	8.40 84.0	10.50 105.0	12.60 126.0	14.17 141.7	17.01 170.1	18.90 189.0	22.67 226.7	28.34 283.4	30	30

- * Gearhead and decimal gearhead are sold separately.
- * The code in □ of gearhead model is for gear ratio.
- * ■ color indicates that the output shaft of the geared motor rotates in the same direction as the output shaft of the motor. Others indicate rotation in the opposite direction.
- * If you are to have less ratio than the ratio in the table, you can install the decimal gearhead, which has one tenth of the ratio, between the gearhead and the motor. In this case, the permissible torque is 3N·m/30kgf·cm.
- * RPM is based on motor's synchronous rpm (50HZ:1500rpm, 60HZ:1800rpm) and calculated by dividing gear ratio. Actual rpm is 2~20% less than indicating rpm according to load size.

GEARHEAD

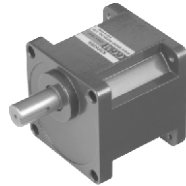
CONNECTION DIAGRAMS



※The direction of motor rotation is as viewed from the front shaft end of the motor

DIMENSIONS

K9P□BU

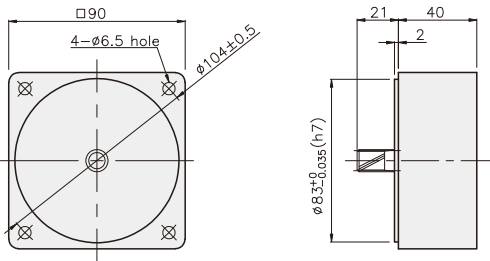


K9P□BUF



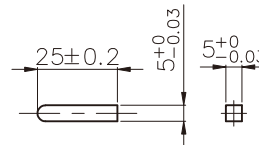
DECIMAL GEARHEAD

K9P10BX

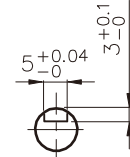


KEY SPEC

● KEY

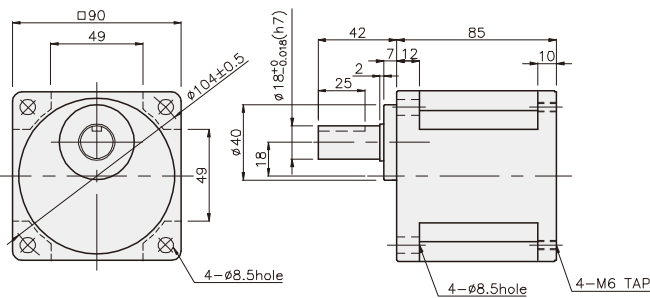


● KEY GROOVE

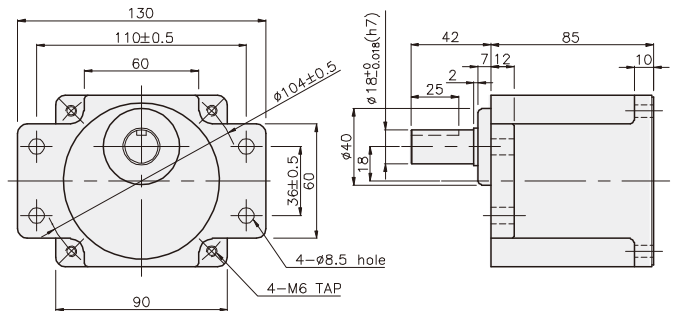


GEARHEAD

K9P□BU



K9P□BUF



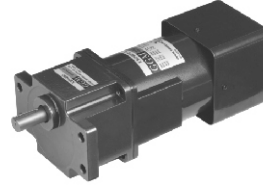
GEARHEAD

DIMENSIONS

K9RP180F□-SU + K9P□BU



K9RP180F□-SU + K9P□BUF



WEIGHT

PART	WEIGHT(kg)
MOTOR	4.24
DECIMAL GEARHEAD	0.62

DIMENSION TABLE

PART No.	Application Model	Mounting BOLT
01	K9P3~200BU	M6 P1.0 × 20
02	K9P10BX	M6 P1.0 × 65

WEIGHT

PART	WEIGHT(kg)
K9P3~10BU	1.44
K9P12.5~20BU	1.55
K9P25~60BU	1.69
K9P75~200BU	1.74

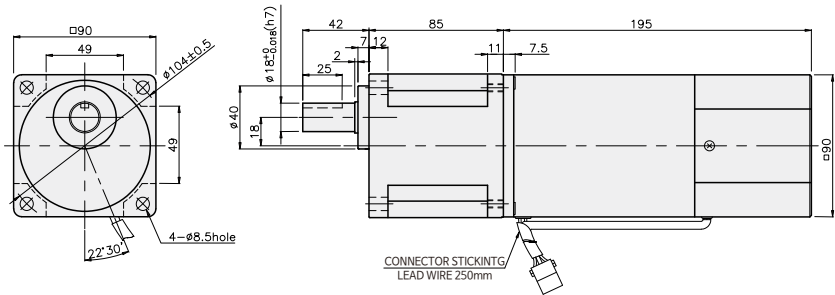
DIMENSION TABLE

PART No.	Application Model	Mounting BOLT
01	K9P3~200BUF	M6 P1.0 × 20
02	K9P10BX	M6 P1.0 × 65

WEIGHT

PART	WEIGHT(kg)
K9P3~10BUF	1.50
K9P12.5~20BUF	1.62
K9P25~60BUF	1.76
K9P75~200BUF	1.82

K9RP180F□-SU + K9P□BU



K9RP180F□-SU + K9P□BUF

