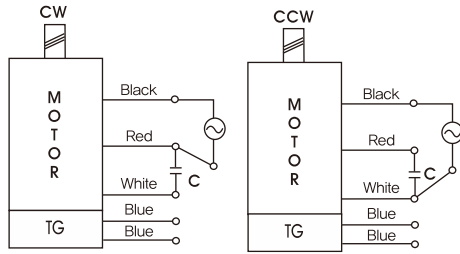


GEARHEADS

CONNECTION DIAGRAMS



※The direction of motor rotation is as viewed from the front shaft end of the motor

DIMENSIONS

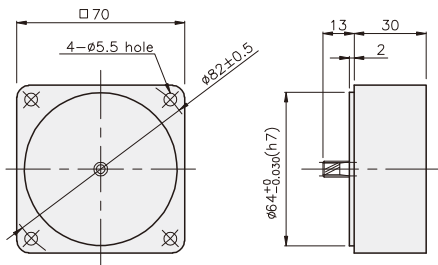
K7G□B(C)



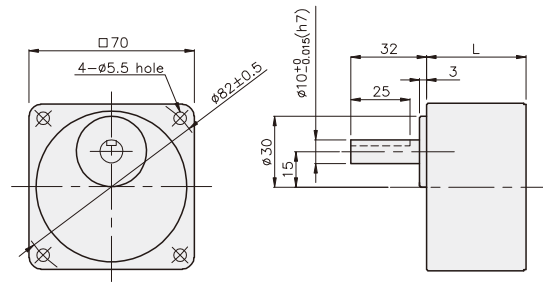
K7IG15N□-SP + K7G□B(C)



DECIMAL GEARHEAD
K7G10BX

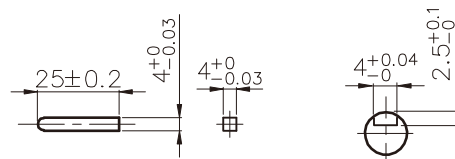


GEARHEAD
K7G□B(C)



KEY SPEC

- KEY
- KEY GROOVE



DIMENSION TABLE

PART No.	L	Application Model	Mounting BOLT
01	32	K7G3~18B(C)	M5 P0.8 X 50
02	42	K7G20~200B(C)	M5 P0.8 X 65
03	30	K7G10BX	M5 P0.8 X 90

WEIGHT

PART	WEIGHT(kg)	
MOTOR	1.16	
DECIMAL GEAR HEAD	0.32	
GEAR HEAD	K7G3~18B(C)	0.38
	K7G20~40B(C)	0.46
	K7G50~200B(C)	0.51

K7IG15N□-SP + K7G□B(C)

