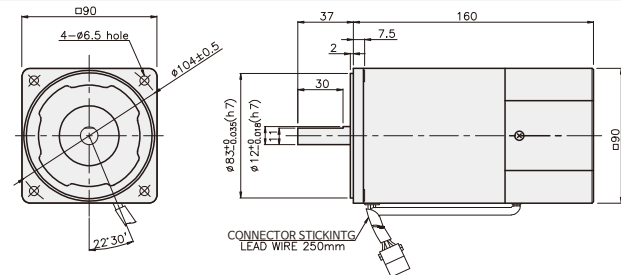


## SPEED CONTROL MOTOR - SU SERIES

**60W**

**□90mm**

**REVERSIBLE MOTOR**



### SPECIFICATIONS

60W 30分正格, 4极

Model	Voltage (V)	Frequency (Hz)	Speed (rpm)	Permissible Torque		Start T. (N·m/kgf·cm)	Current (A)	Condenser (μF)
				1200rpm	90rpm			
				(N·m/kgf·cm)	(N·m/kgf·cm)			
K9R□60FJ-SU	100	50	90 ~ 1400	0.5/5	0.17/1.7	0.3/3	2.5	25
		60	90 ~ 1700					
K9R□60FU-SU	110	60	90 ~ 1700	0.5/5	0.17/1.7	0.295/2.95	2.1	17
	115						2.2	
K9R□60FL-SU	200	50	90 ~ 1400	0.5/5	0.15/1.5	0.26/2.6	0.72	6
		60	90 ~ 1700	0.48/4.8	0.17/1.7	0.23/2.3	0.76	
K9R□60FC-SU	220	50	90 ~ 1400	0.5/5	0.15/1.5	0.3/3	0.95	5
		60	90 ~ 1700	0.48/4.8	0.17/1.7	0.26/2.6	0.94	
	230	50	90 ~ 1400	0.5/5	0.15/1.5	0.3	1	
		60	90 ~ 1700	0.48/4.8	0.17/1.7	0.26/2.6	1.2	
K9R□60FD-SU	240	50	90 ~ 1400	0.5/5	0.15/1.5	0.32/3.2	1.2	

\* □ : 电机轴形状 ( S : STRAIGHT, P : PINION )

### RATED TORQUE OF GEARHEAD

#### ● 单项 100V/115V

单位 = 上段 : N·m / 下段 : kgf·cm

Model Motor/Gearhead	Ratio Speed(rpm)	3	3.6	5	6	7.5	9	10	12.5	15	18	20	25	30	36	40	50	60	75	90	100	120	150	180	200
		K9R□60F□-SU K9P□B, BF	1200	1.22 1.22	1.46 1.46	2.03 2.03	2.43 2.43	3.04 3.04	3.65 3.65	4.05 4.05	4.56 4.56	5.47 5.47	6.56 6.56	7.29 7.29	8.20 8.20	9.84 9.84	11.81 11.81	13.12 13.12	16.40 16.40	19.68 19.68	20 200	20 200	20 200	20 200	20 200
90	0.41 4.1		0.50 5.0	0.69 6.9	0.83 8.3	1.03 10.3	1.24 12.4	1.38 13.8	1.55 15.5	1.86 18.6	2.23 22.3	2.48 24.8	2.79 27.9	3.35 33.5	4.02 40.2	4.46 44.6	5.58 55.8	6.69 66.9	7.53 75.3	9.03 90.3	10.04 100.4	12.05 120.5	15.06 150.6	18.07 180.7	20 200

#### ● 单项 200V/240V

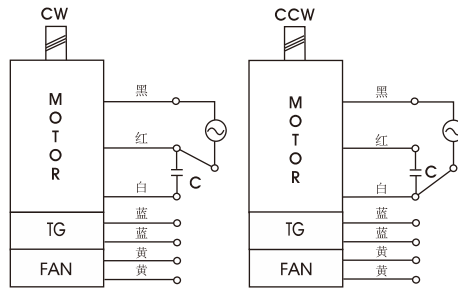
单位 = 上段 : N·m / 下段 : kgf·cm

Model Motor/Gearhead	Ratio Speed(rpm)	3	3.6	5	6	7.5	9	10	12.5	15	18	20	25	30	36	40	50	60	75	90	100	120	150	180	200	
		K9R□60F□-SU K9P□B, BF	1200	200V/220V 230V/240V 50Hz	1.22 1.22	1.46 1.46	2.03 2.03	2.43 2.43	3.04 3.04	3.65 3.65	4.05 4.05	4.56 4.56	5.47 5.47	6.56 6.56	7.29 7.29	8.20 8.20	9.84 9.84	11.81 11.81	13.12 13.12	16.40 16.40	19.68 19.68	20 200	20 200	20 200	20 200	20 200
200V/220V 230V/240V 60Hz	1.17 11.7			1.40 14.0	1.94 19.4	2.33 23.3	2.92 29.2	3.50 35.0	3.89 38.9	4.37 43.7	5.25 52.5	6.30 63.0	7.00 70.0	7.87 78.7	9.45 94.5	11.34 113.4	12.60 126.0	15.75 157.5	18.90 189.0	20 200	20 200	20 200	20 200	20 200	20 200	
90	200V/220V 230V/240V 50Hz		0.36 3.6	0.44 4.4	0.61 6.1	0.73 7.3	0.91 9.1	1.09 10.9	1.22 12.2	1.37 13.7	1.64 16.4	1.97 19.7	2.19 21.9	2.46 24.6	2.95 29.5	3.54 35.4	3.94 39.4	4.92 49.2	5.90 59.0	6.64 66.4	7.97 79.7	8.86 88.6	10.63 106.3	13.29 132.9	15.94 159.4	17.71 177.1
	200V/220V 230V/240V 60Hz		0.41 4.1	0.50 5.0	0.69 6.9	0.83 8.3	1.03 10.3	1.24 12.4	1.38 13.8	1.55 15.5	1.86 18.6	2.23 22.3	2.48 24.8	2.79 27.9	3.35 33.5	4.02 40.2	4.46 44.6	5.58 55.8	6.69 66.9	7.53 75.3	9.03 90.3	10.04 100.4	12.05 120.5	15.06 150.6	18.07 180.7	20 200

- \* 减速机。中间减速机为另卖品。
- \* 减速机品名中 □里 为减速比。
- \* ■色是与电机同一方向，其它为反方向。
- \* 表 比此减速比还要高的减速比时可以使用中间减速机。此时的许容扭矩为 20N·m/200kgf·cm。
- \* 转速以电机同期转速 (50Hz : 1500RPM 60Hz : 1800RPM) 为基准除以减速比计算出来的。实际转速根据负载的大小比表上的数据小2-20%。

## GEARHEAD

### CONNECTION DIAGRAMS



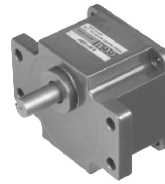
旋转方向由出力轴侧看时

### DIMENSIONS

K9P□B

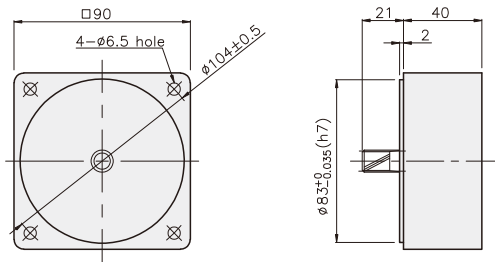


K9P□BF

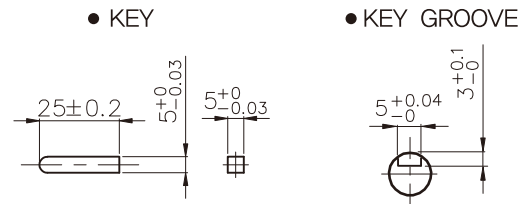


### DECIMAL GEARHEAD

K9P10BX

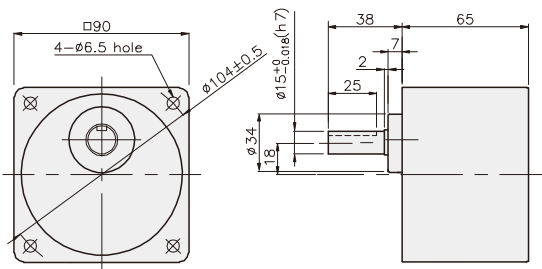


### KEY SPEC

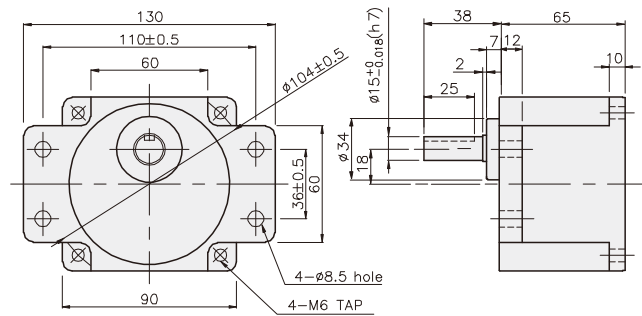


### GEARHEAD

K9P□B



K9P□BF



SPEED CONTROL MOTOR  
- SU SERIES

## GEARHEAD

### DIMENSIONS

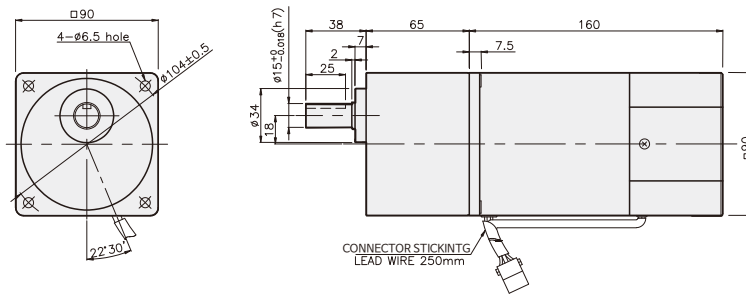
K9RP60F□-SU + K9P□B



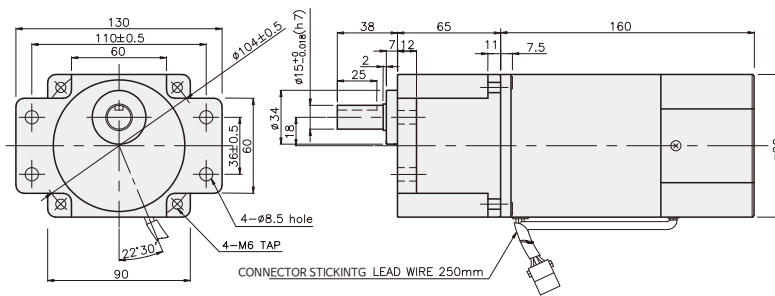
K9RP60F□-SU + K9P□BF



K9RP60F□-SU + K9P□B



K9RP60F□-SU + K9P□BF



#### 尺寸表

编号	应用型号	安装螺丝
01	K9P3~200B	M6 P1,0 X 95
02	K9P10BX	M6 P1,0 X 140

#### 重量

PART	WEIGHT(kg)	
MOTOR	3,06	
DECIMAL GEAR HEAD	0,62	
GEAR HEAD	K9P3~10B	1,22
	K9P12,5~20B	1,32
	K9P25~60B	1,42
	K9P75~200B	1,45

#### 尺寸表

编号	应用型号	安装螺丝
01	K9P3~200BF	M6 P1,0 X 20
02	K9P10BX	M6 P1,0 X 65

#### 重量

PART	WEIGHT(kg)	
MOTOR	3,58	
DECIMAL GEAR HEAD	0,62	
GEAR HEAD	K9P3~10BF	1,22
	K9P12,5~20BF	1,30
	K9P25~60BF	1,42
	K9P75~200BF	1,44