

REVERSIBLE MOTOR

25W

□ 80mm LEAD WIRE TYPE
TERMINAL BOX TYPE

K8RS25N□



K8RS25N□-T, T5



SPECIFICATIONS

25W 30 minutes rating, four poles

| Model | Voltage (V) | Frequency (Hz) | Current (A) | Start T. (N*m/Kgf*cm) | Rated T. (N*m/Kgf*cm) | Speed (rpm) | Condenser (μF) |
|-------------------|-------------|----------------|-------------|-----------------------|-----------------------|-------------|----------------|
| K8R□25NJ(-T, -T5) | 100 | 50 | 0,65 | 0,15/1,5 | 0,195/1,95 | 1250 | 10 |
| | | 60 | 0,74 | | | 1500 | |
| K8R□25NU(-T, -T5) | 110 | 60 | 0,51 | 0,13/1,3 | 0,165/1,65 | 1500 | 6 |
| | 115 | | 0,54 | | | | |
| K8R□25NL(-T, -T5) | 200 | 50 | 0,33 | 0,16/1,6 | 0,195/1,95 | 1250 | 2,5 |
| | | 60 | 0,37 | | | 1550 | |
| K8R□25NC(-T, -T5) | 220 | 50 | 0,29 | 0,15/1,5 | 0,195/1,95 | 1250 | 2 |
| | | 60 | 0,34 | | | 1500 | |
| | 230 | 50 | 0,35 | 0,165/1,65 | 0,195/1,95 | 1250 | |
| | | 60 | 0,34 | | | 1500 | |
| K8R□25ND(-T, -T5) | 240 | 50 | 0,32 | 0,15/1,5 | 0,19/1,9 | 1300 | 1,5 |

* □ : SHAFT SHAPE (S : STRAIGHT, G : PINION)

RATED TORQUE OF GEARHEAD

● 50Hz

unit = above : N·m / below : Kgf·cm

| Model | Speed(rpm) | 500 | 416 | 300 | 250 | 200 | 166 | 150 | 120 | 100 | 83 | 75 | 60 | 50 | 41 | 37 | 30 | 25 | 20 | 16 | 15 | 12,5 | 10 | 8,3 | 7,5 | 6 |
|-------------------------------|------------|------|------|------|------|------|------|------|------|------|------|------|------|------|------|------|------|------|----|----|-----|------|-----|-----|-----|-----|
| Motor/ Gearhead | Ratio | 3 | 3,6 | 5 | 6 | 7,5 | 9 | 10 | 12,5 | 15 | 18 | 20 | 25 | 30 | 36 | 40 | 50 | 60 | 75 | 90 | 100 | 120 | 150 | 180 | 200 | 250 |
| K8R□25N□(-T, -T5) K8G□B(C) | | 0,46 | 0,55 | 0,77 | 0,92 | 1,15 | 1,39 | 1,54 | 1,92 | 2,31 | 2,77 | 2,77 | 3,46 | 4,16 | 4,99 | 5,54 | 6,23 | 7,48 | 8 | 8 | 8 | 8 | 8 | 8 | 8 | 8 |
| | | 4,6 | 5,5 | 7,7 | 9,2 | 11,5 | 13,9 | 15,4 | 19,2 | 23,1 | 27,7 | 27,7 | 34,6 | 41,6 | 49,9 | 55,4 | 62,3 | 74,8 | 80 | 80 | 80 | 80 | 80 | 80 | 80 | 80 |

● 60Hz

unit = above : N·m / below : Kgf·cm

| Model | Speed(rpm) | 600 | 500 | 360 | 300 | 240 | 200 | 180 | 144 | 120 | 100 | 90 | 72 | 60 | 50 | 45 | 36 | 30 | 24 | 20 | 18 | 15 | 12 | 10 | 9 | 7,2 |
|-------------------------------|------------|------|------|------|------|------|------|------|------|------|------|------|------|------|------|------|------|------|------|----|-----|-----|-----|-----|-----|-----|
| Motor/ Gearhead | Ratio | 3 | 3,6 | 5 | 6 | 7,5 | 9 | 10 | 12,5 | 15 | 18 | 20 | 25 | 30 | 36 | 40 | 50 | 60 | 75 | 90 | 100 | 120 | 150 | 180 | 200 | 250 |
| K8R□25N□(-T, -T5) K8G□B(C) | | 0,39 | 0,47 | 0,65 | 0,78 | 0,97 | 1,17 | 1,30 | 1,62 | 1,94 | 2,33 | 2,33 | 2,92 | 3,50 | 4,20 | 4,67 | 5,25 | 6,30 | 7,87 | 8 | 8 | 8 | 8 | 8 | 8 | 8 |
| | | 3,9 | 4,7 | 6,5 | 7,8 | 9,7 | 11,7 | 13,0 | 16,2 | 19,4 | 23,3 | 23,3 | 29,2 | 35,0 | 42,0 | 46,7 | 52,5 | 63,0 | 78,7 | 80 | 80 | 80 | 80 | 80 | 80 | 80 |

* Gearhead and decimal gearhead are sold separately.

* The code in □ of gearhead model is for gear ratio.

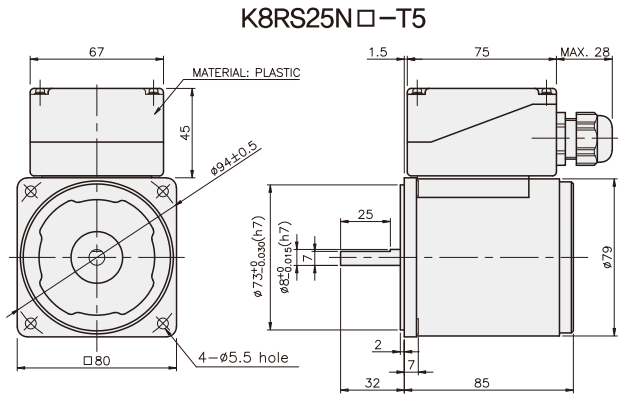
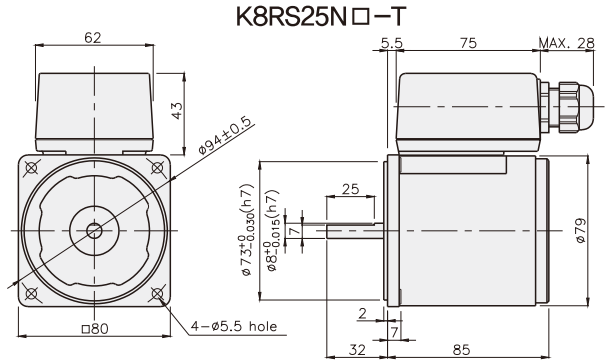
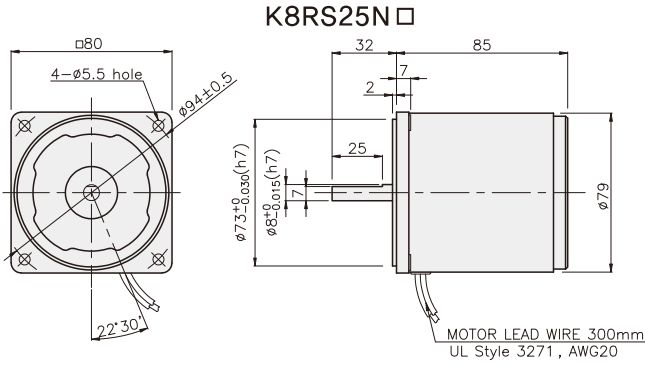
* ■ color indicates that the output shaft of the geared motor rotates in the same direction as the output shaft of the motor. Others indicate rotation in the opposite direction.

* If you are to have less ratio than the ratio in the table, you can install the decimal gearhead, which has one tenth of the ratio, between the gearhead and the motor. In this case, the permissible torque is 8N·m/80kgf·cm. But, if you install 1/25~1/40 gearhead, the permissible torque is 6N·m/60kgf·cm.

* RPM is based on motor's synchronous rpm (50HZ:1500rpm, 60HZ:1800rpm) and calculated by dividing gear ratio. Actual rpm is 2~20% less than indicating rpm according to load size.

GEARHEADS

DIMENSIONS

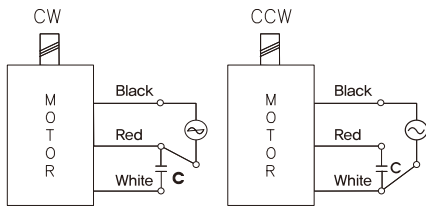


REVERSIBLE MOTORS

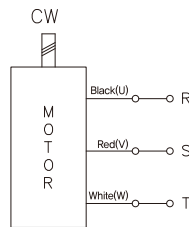
CONNECTION DIAGRAMS

K8RS25N □

single phase motor



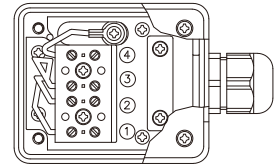
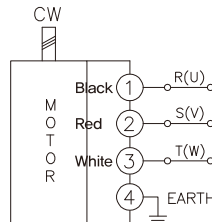
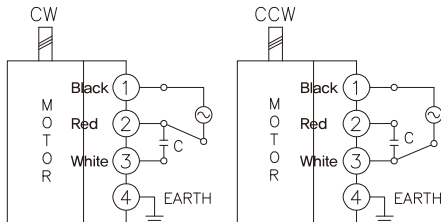
three phase motor



connecting two leadwires of U,V,W in turns

※The direction of motor rotation is as viewed from the front shaft end of the motor

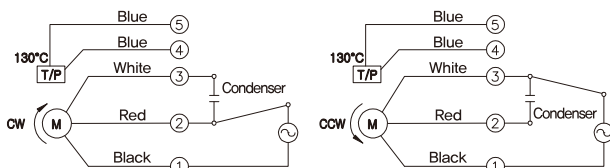
K8RS25N □-T



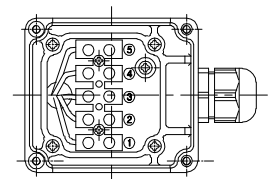
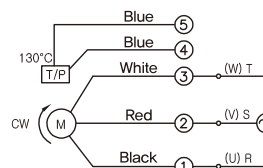
※The direction of motor rotation is as viewed from the front shaft end of the motor

K8RS25N □-T5

single phase motor



three phase motor



connecting two leadwires of U,V,W in turns

※The direction of motor rotation is as viewed from the front shaft end of the motor

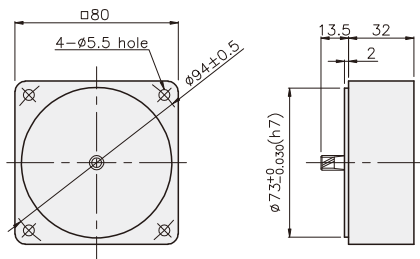
GEARHEADS

DIMENSIONS

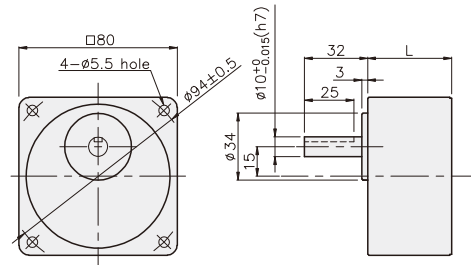
K8G□B(C)



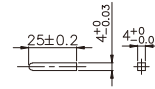
DECIMAL GEARHEAD
K8G10BX



GEAR HEAD
K8G□B(C)



• KEY



• KEY GROOVE



GEARHEADS

DIMENSIONS

K8RG25N□ + K8G□B(C)



K8RG25N□-T(-T5) + K8G□B(C)



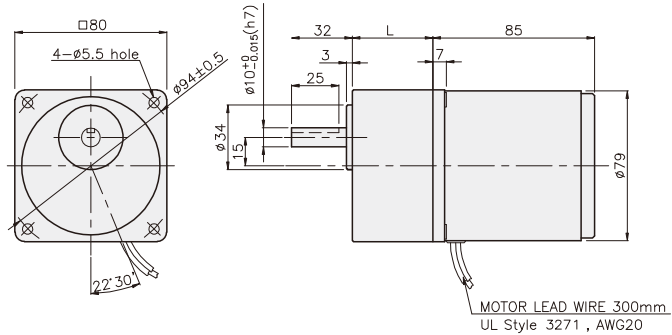
DIMENSION TABLE

| PART No | L | Application Model | Mounting BOLT |
|---------|------|-------------------|---------------|
| 01 | 32 | K8G3~18B(C) | M5 P0,8 X 50 |
| 02 | 42,5 | K8G20~250B(C) | M5 P0,8 X 65 |
| 03 | 32 | K8G10BX | M5 P0,8 X 95 |

WEIGHT

| PART | WEIGHT(kg) | |
|-------------------|---------------|------|
| MOTOR | 1,58 | |
| DECIMAL GEAR HEAD | 0,46 | |
| GEAR HEAD | K8G3~18B(C) | 0,51 |
| | K8G20~40B(C) | 0,64 |
| | K8G50~250B(C) | 0,70 |

K8RG25N□ + K8G□B(C)



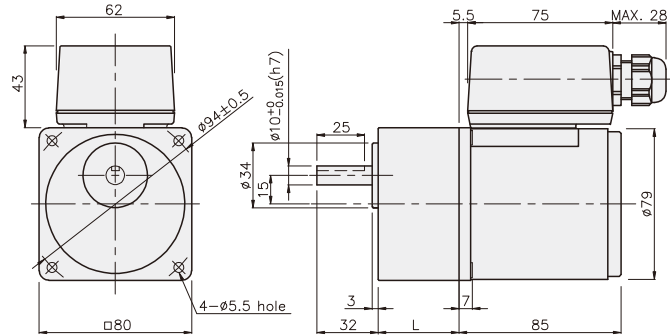
DIMENSION TABLE

| PART No | L | Application Model | Mounting BOLT |
|---------|------|-------------------|---------------|
| 01 | 32 | K8G3~18B(C) | M5 P0,8 X 50 |
| 02 | 42,5 | K8G20~250B(C) | M5 P0,8 X 60 |
| 03 | 32 | K8G10BX | M5 P0,8 X 95 |

WEIGHT

| PART | WEIGHT(kg) | |
|-------------------|---------------|------|
| MOTOR | 1,76 | |
| DECIMAL GEAR HEAD | 0,46 | |
| GEAR HEAD | K8G3~18B(C) | 0,51 |
| | K8G20~40B(C) | 0,64 |
| | K8G50~250B(C) | 0,70 |

K8RG25N□-T + K8G□B(C)



DIMENSION TABLE

| PART No | L | Application Model | Mounting BOLT |
|---------|------|-------------------|---------------|
| 01 | 32 | K8G3~18B(C) | M5 P0,8 X 50 |
| 02 | 42,5 | K8G20~250B(C) | M5 P0,8 X 60 |
| 03 | 32 | K8G10BX | M5 P0,8 X 95 |

WEIGHT

| PART | WEIGHT(kg) | |
|-------------------|---------------|------|
| MOTOR | 1,76 | |
| DECIMAL GEAR HEAD | 0,46 | |
| GEAR HEAD | K8G3~18B(C) | 0,51 |
| | K8G20~40B(C) | 0,64 |
| | K8G50~250B(C) | 0,70 |

K8RG25N□-T5 + K8G□B(C)

