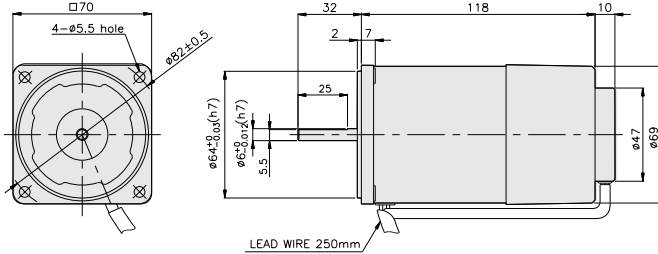


## SPEED CONTROL & BRAKE MOTOR

**15W** □70mm

K7RS15N□-D



### SPECIFICATIONS

15W 30 minutes rating, four poles

Model	Voltage (V)	Frequency (Hz)	Speed Range (rpm)	Permissible Torque		Start T. (N*m/Kgf*cm)	Current (A)	Condenser (μF)	Friction T. (N*m/Kgf*cm)
				1200rpm (N*m/Kgf*cm)	90rpm (N*m/Kgf*cm)				
K7R□15NJ-D	100	50	90 ~ 1400	0.14/1.4	0.05/0.5	0.085/0.85	0.56	7	0.2/2
		60	90 ~ 1700						
K7R□15NU-D	110	60	90 ~ 1700	0.14/1.4	0.05/0.5	0.085/0.85	0.58	6	0.2/2
	115								
K7R□15NL-D	200	50	90 ~ 1400	0.135/1.35	0.055/0.55	0.09/0.9	0.31	2	0.2/2
		60	90 ~ 1700	0.115/1.15			0.33		
K7R□15NC-D	220	50	90 ~ 1400	0.135/1.35	0.05/0.5	0.08/0.8	0.3	1.5	0.2/2
		60	90 ~ 1700	0.115/1.15			0.33		
	230	50	90 ~ 1400	0.135/1.35	0.055/0.55	0.085/0.85	0.3		
		60	90 ~ 1700	0.115/1.15			0.33		
K7R□15ND-D	240	50	90 ~ 1400	0.135/1.35	0.05/0.5	0.09/0.9	0.34	1.5	0.2/2

\* □ : SHAFT SHAPE (S : STRAIGHT, G : PINION)

### RATED TORQUE OF GEARHEAD

#### ● Single-phase 100V/115V

unit = above : N·m / below : Kgf·cm

Model	Ratio	Speed (rpm)																							
		3	3.6	5	6	7.5	9	10	12.5	15	18	20	25	30	36	40	50	60	75	90	100	120	150	180	200
K7R□15N□-D K7G□B(C)	1200	0.34 3.4	0.41 4.1	0.57 5.7	0.68 6.8	0.85 8.5	1.02 10.2	1.13 11.3	1.42 14.2	1.70 17.0	2.04 20.4	2.04 20.4	2.25 22.5	3.06 30.6	3.67 36.7	4.08 40.8	4.59 45.9	5 50	5 50	5 50	5 50	5 50	5 50	5 50	5 50
	90	0.12 1.2	0.15 1.5	0.20 2.0	0.24 2.4	0.30 3.0	0.36 3.6	0.41 4.1	0.51 5.1	0.61 6.1	0.73 7.3	0.73 7.3	0.91 9.1	1.09 10.9	1.31 13.1	1.46 14.6	1.64 16.4	1.97 19.7	2.46 24.6	2.95 29.5	3.28 32.8	3.94 39.4	4.92 49.2	5 50	5 50

#### ● Single-phase 200V/240V

unit = above : N·m / below : Kgf·cm

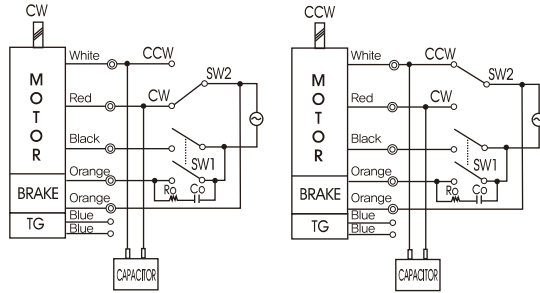
Model	Ratio	Speed (rpm)																							
		3	3.6	5	6	7.5	9	10	12.5	15	18	20	25	30	36	40	50	60	75	90	100	120	150	180	200
K7R□15N□-D K7G□B(C)	1200	200V/220V/230V/ 240V/50Hz	0.33 3.3	0.39 3.9	0.55 5.5	0.66 6.6	0.82 8.2	0.98 9.8	1.09 10.9	1.37 13.7	1.64 16.4	1.97 19.7	2.46 24.6	2.95 29.5	3.54 35.4	3.94 39.4	4.43 44.3	5 50	5 50	5 50	5 50	5 50	5 50	5 50	5 50
		200V/220V/ 230V/60Hz	0.28 2.8	0.34 3.4	0.47 4.7	0.56 5.6	0.70 7.0	0.84 8.4	0.93 9.3	1.16 11.6	1.40 14.0	1.68 16.8	1.68 16.8	2.10 21.0	2.52 25.2	3.02 30.2	3.35 33.5	3.77 37.7	4.53 45.3	5 50	5 50	5 50	5 50	5 50	5 50
	90	200V/230V/ 50Hz/60Hz	0.13 1.3	0.16 1.6	0.22 2.2	0.27 2.7	0.33 3.3	0.40 4.0	0.45 4.5	0.56 5.6	0.67 6.7	0.80 8.0	0.80 8.0	1.00 10.0	1.20 12.0	1.44 14.4	1.60 16.0	1.80 18.0	2.17 21.7	2.71 27.1	3.25 32.5	3.61 36.1	4.33 43.3	5 50	5 50
		220V/50Hz/60Hz/ 240V/50Hz	0.12 1.2	0.15 1.5	0.20 2.0	0.24 2.4	0.30 3.0	0.36 3.6	0.41 4.1	0.51 5.1	0.61 6.1	0.73 7.3	0.73 7.3	0.91 9.1	1.09 10.9	1.31 13.1	1.46 14.6	1.64 16.4	1.97 19.7	2.46 24.6	2.95 29.5	3.28 32.8	3.94 39.4	4.92 49.2	5 50

- \* Gearhead and decimal gearhead are sold separately.
- \* The code in □ of gearhead model is for gear ratio.
- \*  color indicates that the output shaft of the geared motor rotates in the same direction as the output shaft of the motor. Others indicate rotation in the opposite direction.
- \* If you are to have less ratio than the ratio in the table, you can install the decimal gearhead, which has one tenth of the ratio, between the gearhead and the motor. In this case, the permissible torque is 5N·m/50kgf·cm.
- \* RPM is based on motor's synchronous rpm (50HZ:1500rpm, 60HZ:1800rpm) and calculated by dividing gear ratio. Actual rpm is 2~20% less than indicating rpm according to load size.

## GEARHEADS

### CONNECTION DIAGRAMS

Connect Cr circuit for absorbing surge voltage as connection diagram to protect contact point.  
 $R_o = 5 - 200\Omega$   
 $C_o = 0.1 \sim 0.2\mu F$  200WV(400WV)



※The direction of motor rotation is as viewed from the front shaft end of the motor

SPEED CONTROL & BRAKE MOTOR

### DIMENSIONS

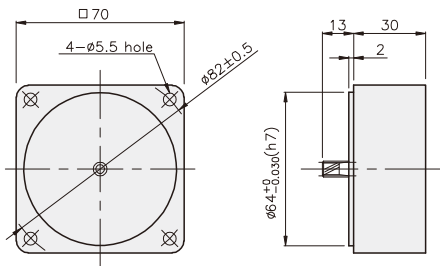
K7G□B(C)



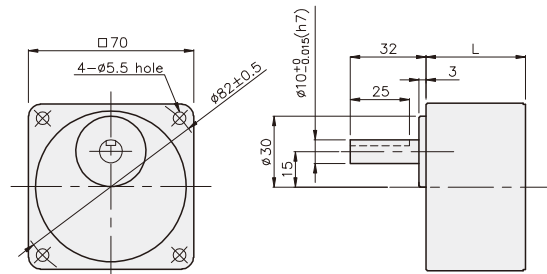
K7RG15N□-D + K7G□B(C)



DECIMAL GEARHEAD  
K7G10BX

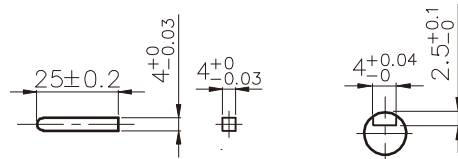


GEARHEAD  
K7G□B(C)



### KEY SPEC

- KEY
- KEY GROOVE

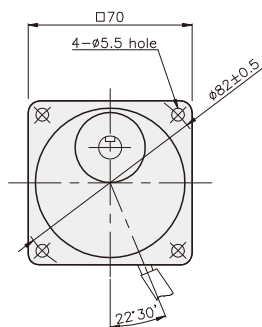


### DIMENSION TABLE

PART No.	L	Application Model	Mounting BOLT
01	32	K7G3~18B(C)	M5 P0,8 X 50
02	42	K7G20~200B(C)	M5 P0,8 X 65
03	30	K7G10BX	M5 P0,8 X 90

### WEIGHT

PART	WEIGHT(kg)	
MOTOR	1,42	
DECIMAL GEAR HEAD	0,32	
GEAR HEAD	K7G3~18B(C)	0,38
	K7G20~40B(C)	0,46
	K7G50~200B(C)	0,51



K7RG15N□-D + K7G□B(C)

