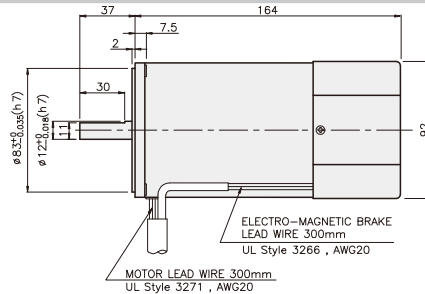
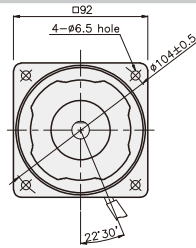


BRAKE MOTOR

60W

□90mm

K9□P60F□-B



SPECIFICATIONS

60W 单项: 30分正格, 3项: 连续正格, 4极

Model	Duty	Voltage (V)	Frequency (Hz)	Current (A)	Start T. (N·m/kgf·cm)	Rated T. (N·m/kgf·cm)	Speed (rpm)	Condenser (μF)	Friction T. (N·m/kgf·cm)			
K9R□60FJ-B K9R□60FU-B K9R□60FL-B K9R□60FC-B K9R□60FD-B	单项	30分	100	50	1.48	0.48/4.8	0.47/4.7	25	1/10			
				60	1.66		0.38/3.8					
			K9R□60FU-B	110	60	50	1.25	0.4/4	0.38/3.8	17	1/10	
						60	1.31	0.425/4.25				
			K9R□60FL-B	200	50	50	0.72	0.5/5	0.47/4.7	6	1/10	
						60	0.76	0.44/4.4	0.39/3.9			
			K9R□60FC-B	220	50	50	0.69	0.45/4.5	0.47/4.7	5	1/10	
						60	0.76	0.48/4.8	0.38/3.8			
					230	50	0.77	0.5/5	0.47/4.7			1250
						60	0.79		0.38/3.8			1550
K9I□60FT-B K9I□60FH-B K9I□60FM-B K9I□60FV-B K9I□60FQ-B K9I□60FZ-B	3项	連續	200	50	0.49	1.35/13.5	0.45/4.5	-	1/10			
				60	0.45	1.05/10.5	0.38/3.8					
			K9I□60FH-B	220	50	50	0.55	1.6/16	0.435/4.35	-	1/10	
						60	0.47	1.2/12	0.37/3.7			
			K9I□60FM-B	230	50	50	0.6	1.65/16.5	0.435/4.35	-	1/10	
						60	0.52	1.3/13	0.37/3.7			
				380	50	0.34	1.55/15.5	0.435/4.35	-			1/10
					60	0.25	1.19/11.9	0.37/3.7				
			K9I□60FV-B	400	50	50	0.37	1.85/18.5	0.435/4.35	-	1/10	
						60	0.28	1.42/14.2	0.37/3.7			
K9I□60FQ-B	415	50	50	0.26	1.45/14.5	0.45/4.5	-	1/10				
			60	0.21	1.15/11.5	0.37/3.7						
K9I□60FZ-B	440	50	50	0.28	1.6/16	0.45/4.5	-	1/10				
			60	0.23	1.25/12.5	0.37/3.7						

* □: 电机轴形状(S: STRAIGHT, P: PINION)

* 三相380V以上的电动机不能与INVERTER组合使用。电动机绕组的绝缘可能恶化并被损坏。

RATED TORQUE OF GEARHEAD

● 50Hz

单位: 上段: N·m / 下段: kgf·cm

Model	Speed(rpm)	500	416	300	250	200	166	150	120	100	83	75	60	50	41	37	30	25	20	16	15	12.5	10	8.3	7.5
Motor/ Gearhead	Ratio	3	3.6	5	6	7.5	9	10	12.5	15	18	20	25	30	36	40	50	60	75	90	100	120	150	180	200
		1.06	1.27	1.76	2.11	2.64	3.17	3.52	3.96	4.76	5.71	6.34	7.14	8.56	10.27	11.42	14.27	17.12	20	20	20	20	20	20	20
K9□60F□-B K9P□B, BF		10.6	12.7	17.6	21.1	26.4	31.7	35.2	39.6	47.6	57.1	63.4	71.4	85.6	102.7	114.2	142.7	171.2	200	200	200	200	200	200	200

● 60Hz

单位: 上段: N·m / 下段: kgf·cm

Model	Speed(rpm)	600	500	360	300	240	200	180	144	120	100	90	72	60	50	45	36	30	24	20	18	15	12	10	9
Motor/ Gearhead	Ratio	3	3.6	5	6	7.5	9	10	12.5	15	18	20	25	30	36	40	50	60	75	90	100	120	150	180	200
		0.90	1.08	1.50	1.80	2.25	2.70	3.00	3.37	4.05	4.86	5.39	6.07	7.28	8.74	9.71	12.14	14.57	16.39	19.66	20	20	20	20	20
K9□60F□-B K9P□B, BF		9.0	10.8	15.0	18.0	22.5	27.0	30.0	33.7	40.5	48.6	53.9	60.7	72.8	87.4	97.1	121.4	145.7	163.9	196.6	200	200	200	200	200

* 减速机。中间减速机为另卖品

* 减速机品名中 □里 为减速比

* 色是与电机同一方向, 其它为反方向。

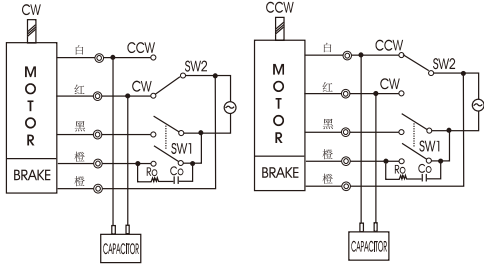
* 表 比此减速比还要高的减速比时可以使用中间减速机。此时的许容扭矩为 20N·m/200kgf·cm。

* 转速以电机同期转速 (50Hz: 1500RPM 60Hz: 1800RPM) 为基准除以减速比计算出来的。实际转速根据负载的大小比表上的数据小2-20%。

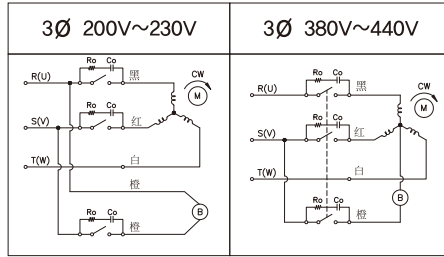
GEARHEAD

CONNECTION DIAGRAMS

单项电机



3项电机



CCW是U, V, W 中2线交换连接

旋转方向由出力轴侧看时

为了保护接点，与接线图一样，请连接地线

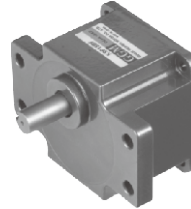
Ro = 5 - 200Ω
Co = 0.1 ~ 0.2μF 200WV(400WV)

DIMENSIONS

K9P□B

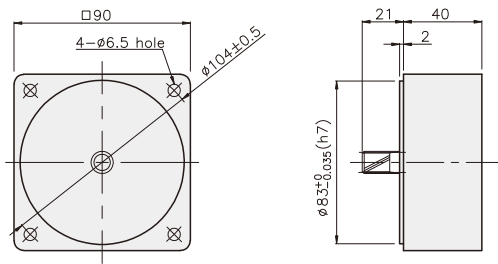


K9P□BF

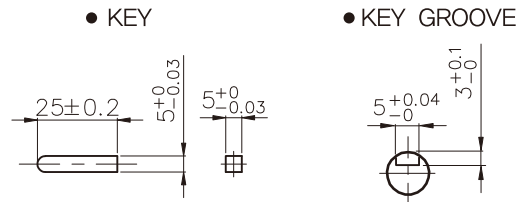


DECIMAL GEARHEAD

K9P10BX

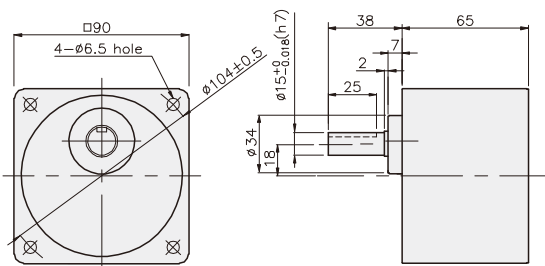


KEY SPEC

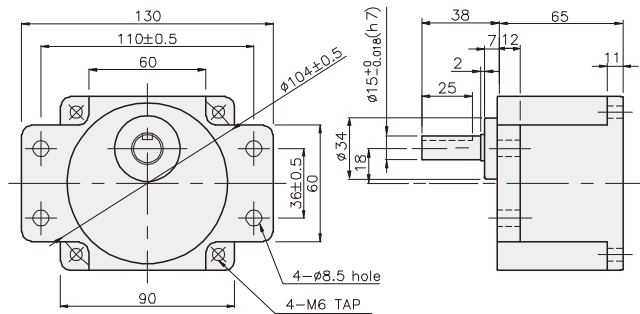


GEARHEAD

K9P□B



K9P□BF



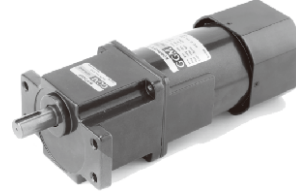
GEARHEAD

DIMENSIONS

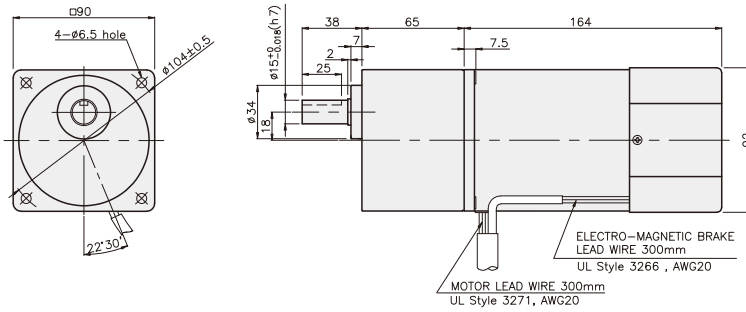
K9□P60F□-B + K9P□B



K9□P60F□-B + K9P□BF



K9□P60F□-B + K9P□B



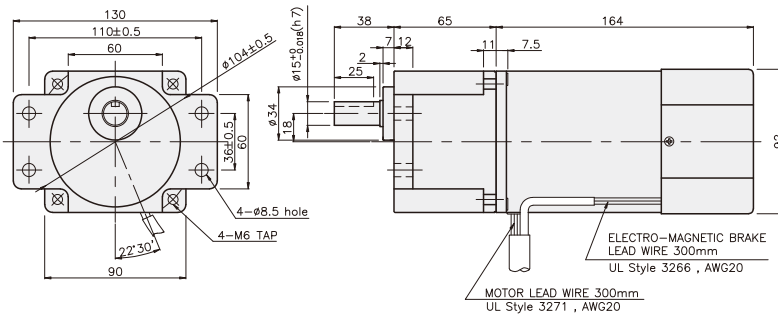
尺寸表

编号	应用型号	安装螺丝
01	K9P3~200B	M6 P1,0 X 95
02	K9P10BX	M6 P1,0 X 140

重量

PART	WEIGHT(kg)	
MOTOR	3,08	
DECIMAL GEARHEAD	0,62	
GEAR HEAD	K9P3~10B	1,22
	K9P12.5~20B	1,32
	K9P25~60B	1,42
	K9P75~200B	1,45

K9□P60F□-B + K9P□BF



尺寸表

编号	应用型号	安装螺丝
01	K9P3~200BF	M6 P1,0 X 20
02	K9P10BX	M6 P1,0 X 65

重量

PART	WEIGHT(kg)	
MOTOR	3,08	
DECIMAL GEARHEAD	0,62	
GEAR HEAD	K9P3~10BF	1,22
	K9P12.5~20BF	1,30
	K9P25~60BF	1,42
	K9P75~200BF	1,44