

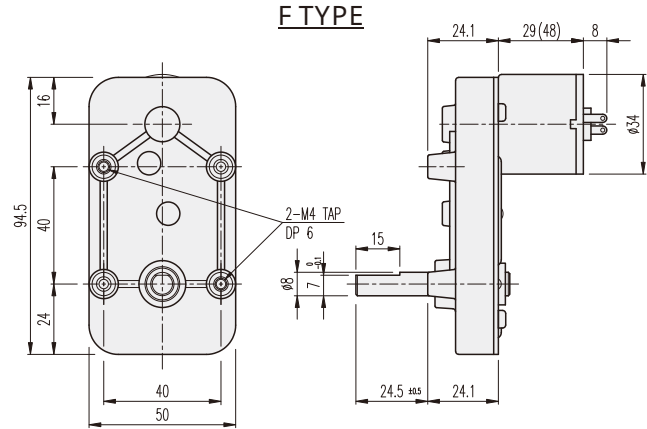
KGN-TYPE

DIMENSIONS

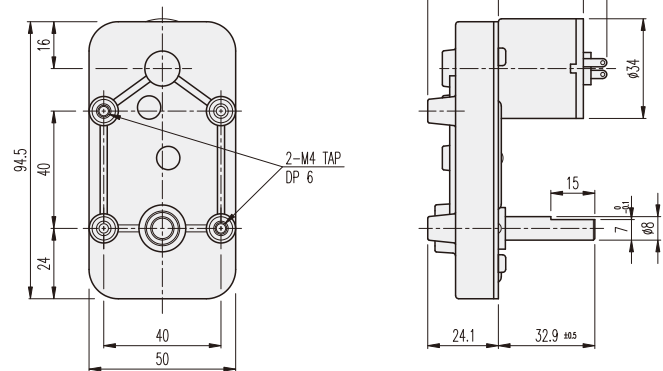
KGN SERIES



F TYPE



R TYPE



AT MAXIMUM EFFICIENCY (KGN-□□□□-KD3429□□)

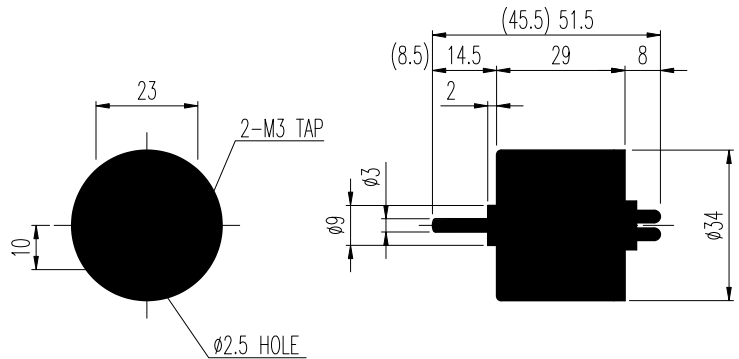
GEAR	MODEL		KD3429S1		KD3429S2		KD3429T1		KD3429T2		KD3429P1		KD3429P2	
			DC 12V		DC 24V		DC 12V		DC 24V		DC 12V		DC 24V	
	rpm	kgf-cm	rpm	kgf-cm	rpm	kgf-cm	rpm	kgf-cm	rpm	kgf-cm	rpm	kgf-cm	rpm	kgf-cm
1/0043	104.7	1.3	104.7	1.3	151	1.3	151	1.3	186	2.5	186	1.3		
1/0050	90	1.5	90	1.5	130	1.5	130	1.5	160	2.9	160	1.5		
1/0105	42.9	3	42.9	3	62	3	62	3	76.2	6	76.2	3		

AT MAXIMUM EFFICIENCY (KGN-□□□□-KD3448□□)

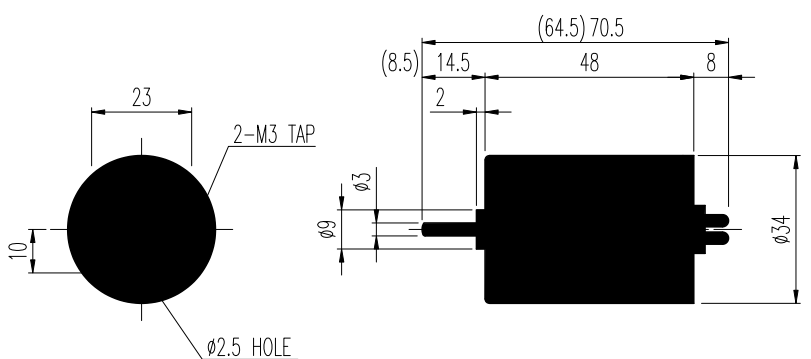
GEAR	MODEL		KD3448S1		KD3448S2		KD3448T1		KD3448T2		KD3448P1		KD3448P2	
			DC 12V		DC 24V		DC 12V		DC 24V		DC 12V		DC 24V	
	rpm	kgf-cm	rpm	kgf-cm	rpm	kgf-cm	rpm	kgf-cm	rpm	kgf-cm	rpm	kgf-cm	rpm	kgf-cm
1/0043	104.7	2.5	104.7	2.5	151	2.5	151	2.5	186	2.5	186	2.5		
1/0050	90	2.9	90	2.9	130	2.9	130	2.9	160	2.9	160	2.9		
1/0105	42.9	6	42.9	6	62	6	62	6	76.2	6	76.2	6		

* 這些比率與電動機的旋轉方向相反。

KD3429□□ SERIES



KD3448□□ SERIES



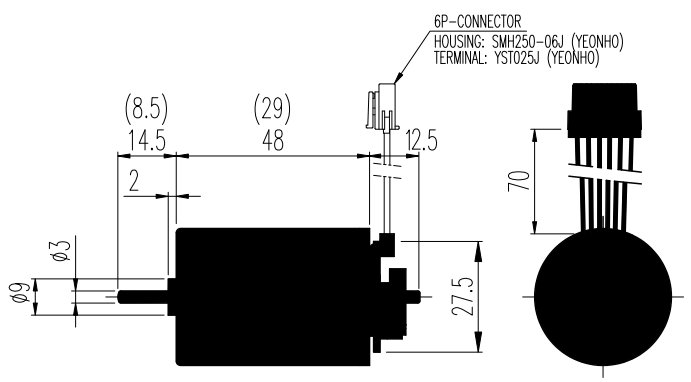
ENCODER SERIES

KD3429□□-E & 3448□□-E



6P-CONNECTOR 接线内容

1	DC MOOTR (+) 電源	供電時
2	DC MOOTR (-) 電源	MOTOR CCW - 逆轉
3	H/SENSOR (+) 電源	Vcc (+) DC 5 ~ 24V
4	H/SENSOR (-) 電源	GROUND
5	H/SENSOR #1 OUT	OPEN COLLECTOR MAX. DC 24V -50mA
6	H/SENSOR #1 OUT	



20極10脈衝 INCREMENTAL TYPE

PERFORMANCE DATA

電壓 (V)	額定電流 (A)	額定轉速 (rpm)	額定力矩 (kg-cm)	最大力矩 (kg-cm)	最大轉速 (rpm)	最大電流 (A)	最大力矩 (kg-cm)	機殼直徑 (mm)
12V	120	5200	40	0.3	4500	1.7	360	90
12V	150	7500	40	0.5	6500	3.8	420	
12V	200	9500	80	1	8000	3.8	330	
12V	150	5200	80	0.5	4500	3.2	830	140
12V	220	7500	80	0.7	6500	5	730	
12V	300	9000	80	0.8	8000	5.5	670	